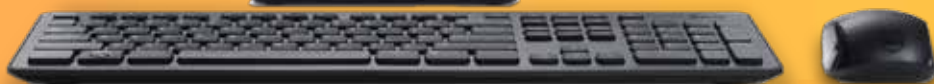
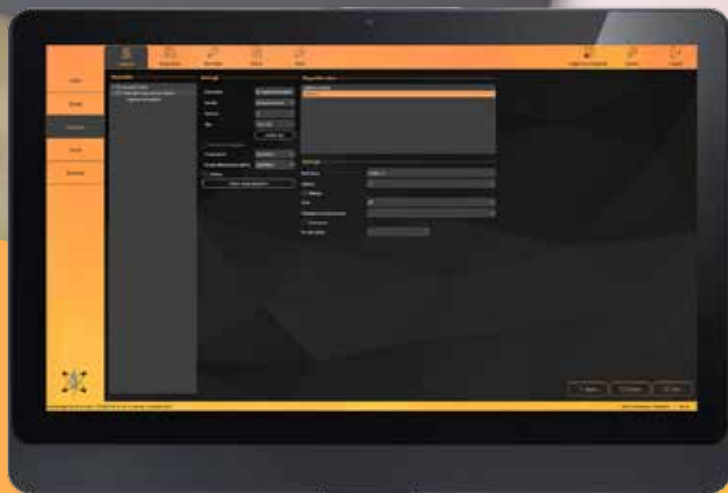


# PassManager

Management software for access control systems



 PassManager



Access Control  
Line



EL.MO. S.P.A.



# PassManager Software

Management software for access control systems

PassManager is a management software for access control systems fully developed by EL.MO. It allows integrating and managing **ICON100AVR and ITDC controllers and their proximity readers** using TCP/IP or serial lines. The update of existing systems is ensured by the possibility to import data from databases in use (i.e. STANDARD software's), thus saving costs and diminishing systems complexity.

PassManager interface is its strength. The application operability and management become extremely easy thanks to its user-friendly and intuitive interface designed to assist the interaction of less experienced users.

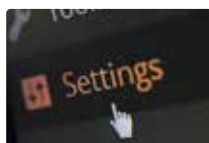
PassManager software flexibility and scalability lies in the possibility to create server-client structures able to meet necessary requirements. In such way, several Client positions can be set referring to only one central server, and several users will be ensured the operativity inside the system.

PassManager is available in **4 versions, all with server and client functions integrated and able to control an unlimited number of users; they differ according to gates managed:**

- **PMANAGER01:** manages an unlimited number of users.
- **PMANAGER02:** manages max 64 gates.
- **PMANAGER03:** manages max 25 gates.
- **PMANAGER04:** manages max 10 gates.

**PassManager Client license (PMANAGERLC)** is also available: it allows activating Client functions on other PCs other than the one working with Server license.

## Main functions



System full configuration



Users management



Creation of access rules



Display of system status and system log

## Strong features



### Extreme simplicity

PassManager software stands out for its dramatic easiness in installation and usage. All functions are organised in a intuitive way, are easily accessible and can be modified with only a few steps. The configuration and commissioning of access control systems are made quickly and easily. All data about systems, users, permissions, system status and events are immediately accessible and arranged organically and precisely.



### Server + client structure

The possibility to create Server + Client architectures that PassManager offers enables the implementation of extremely flexible structures also scalable at the same time. Each PMANAGER license features both server and client functions. The number of Clients working simultaneously with the Server can be increased afterwards with PMANAGERLC licenses.



### User lists and databases import

Another strong point that makes PassManager software dramatically versatile is the possibility to import users lists and databases from other software applications quickly and easily. Besides the capability to import third-party applications users lists, a special simplified procedure is also available to import data directly from the database of STANDARD access control software. In a few clicks, all data will be acquired and available on PassManager. Such procedure ensures the possibility to migrate to PassManager and update existing systems making them more and more performing.



### Card users management

Card users management function allows saving several data about users; such data include people and cars images. The function also supports the management of multiple IDs which allows creating IDs according to usage requirements.



### System log and data export

All system events will be saved to PassManager historic file and can be filtered by time interval, User, Event type, Card code, Building and Reader. In addition, data creation and searching functions are supported by data export function that allows exporting PDF format files and is useful when synchronizing PassManager software with other data transmission applications. Such function becomes a plus when emailing files.



### Application Wizard

The application operativity will be easy also for non experienced users thanks to the automatic step-by-step procedure for controllers configuration and setup; the function also supports the return to default settings at all configuration steps. In addition, the automatic search function for connected controllers allows an easy and quick setup of basic settings.



“PassManager:  
professional software for  
access control systems:  
scalable and interface within  
everyone’s range”



 PassManager

- 1** Quick menu bar for direct access to System, Users profile, Permissions and Events pages and view system status.
- 2** Side bar to access sections sub-menu pages (i.e. Buildings, Backbones, Devices, Gates and Domotics related to Systems menu item).
- 3** Quick keys to create and delete elements and to save changes.
- 4** Quick keys for system devices update and to modify general options.
- 5** Operating area, that is, area where setup activity is performed.
- 6** General info bar: date and time, PassManager Server last run time, Server IP address, communication port and connection status of devices and server.



## Systems Menu

- » Quick menu for access control system structure management.
- » The page includes the following sub-menu items on the side bar: Buildings, Backbones, Devices, Gates and Domotics.
- » Systems structure is organized hierarchically from the larger category (system) to the smaller one (single device gate controller).
- » Possibility to define gates and readers for each controller.
- » Free configuration of operating settings for all system devices.



## Users profile

- » Quick menu for users profiles creation.
- » The page includes the following sub-menu items on the side bar: Companies, Departments, Groups and Users.
- » The structure is organized hierarchically so to operate step by step and assist in entering users on the database.
- » Possibility to associate users photos.
- » Possibility to register access cards for users with related data and info.



## Permissions menu

- » Quick menu to manage time slots and system access authorisations.
- » The page includes the following sub-menu items on the side bar: Calendars, Holidays and Permissions.
- » Display on browsing calendar for quick dates setting.
- » Creation of access time rules and association to single users or user groups.

## Events display

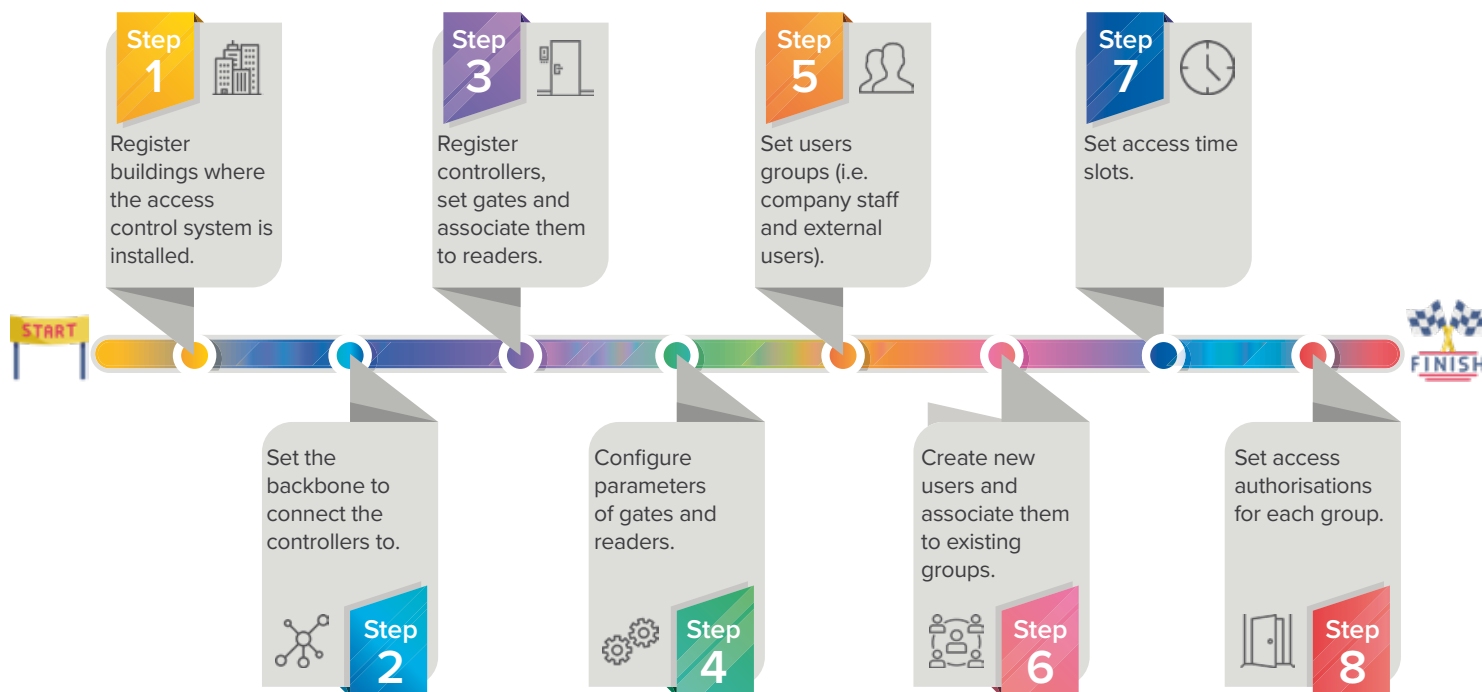
- » Quick menu for full display of all events associated to the access control system.
- » Different colours according to event type (green for access OK, yellow for access denied).
- » Filters to display and catalogue events according to specific needs: time interval filters (i.e. Yesterday, Today, Last 60 mins, time range) or special filters (User, Event, Card Code, Building, Reader).
- » Possibility of automatic or manual update for system event log.



## Operating example: steps

A simple operating example will give the idea of how easy it is to operate with PassManager. If, for example, you want to manage the access control system of a company including two buildings (offices

and warehouse) where some backbones and their related controllers and readers have been installed, 8 simple steps will be enough to make the system fully operating.



## Available versions

Product name	PMANAGER01	PMANAGER02	PMANAGER03	PMANAGER04
Product code	SASCA0100100	SASCA0100200	SASCA0100300	SASCA0100400
Compatible hardware	ITDC and ICON100AVR	ITDC and ICON100AVR	ITDC and ICON100AVR	ITDC and ICON100AVR
Compatible O.S.	Windows 10 (64bit and 32bit)	Windows 10 (64bit and 32bit)	Windows 10 (64bit and 32bit)	Windows 10 (64bit and 32bit)
<b>System features</b>				
Client+server function	Yes	Yes	Yes	Yes
Clients (max, with PMANAGERLC optional license)	Unlimited	Unlimited	Unlimited	Unlimited
Users supported (max)	Unlimited	Unlimited	Unlimited	Unlimited
Access Level	Unlimited	Unlimited	Unlimited	Unlimited
Gates controlled	Unlimited	64	25	10
Readers supported (max)	Unlimited	128	50	20
Calendars management	15 x 100 (ITDC)	15 x 100 (ITDC)	15 x 100 (ITDC)	15 x 100 (ITDC)
<b>Reports features</b>				
Event/Alarm	Yes	Yes	Yes	Yes
File format	PDF	PDF	PDF	PDF
<b>Access Control features</b>				
Duress mode	Yes	Yes	Yes	Yes
Anti-passback mode	Yes	Yes	Yes	Yes
<b>Users Database</b>				
RDMS Database	PostgreSQL 9.3	PostgreSQL 9.3	PostgreSQL 9.3	PostgreSQL 9.3
Possibility to import databases from third-party SW	Yes, from STANDARD SW	Yes, from STANDARD SW	Yes, from STANDARD SW	Yes, from STANDARD SW
Possibility to import user profiles from third-party SW	Yes	Yes	Yes	Yes
<b>Alarms management</b>				
Alarms notification	Yes	Yes	Yes	Yes
Events status	Yes	Yes	Yes	Yes



## Operating example: scheme



1  **PassManager**  
Server+Client PC

2  **PassManager**  
Client PC

3  **ICON100AVR**  
Controller for ① gate management

4  **IPK101**  
Proximity reader with integrated keypad for gate 1

5  **ITDC**  
Controller for ② and ③ gates management

6  **IP10**  
Proximity reader for gate 2

7  **IP10**  
Proximity reader for gate 3



EL.MO. SpA | Via Pontarola, 70 | 35011 Campodarsego (PD) - IT  
Tel: +39.049.9203333 | Fax: +39.049.9200306  
e-Mail: [international@elmospa.com](mailto:international@elmospa.com) | [www.elmospa.com](http://www.elmospa.com)



Intrusion  
Detection



Fire  
Detection



CCTV



Access  
Control



Supervision  
Software



ISO 9001:2015  
ISO 14001:2015